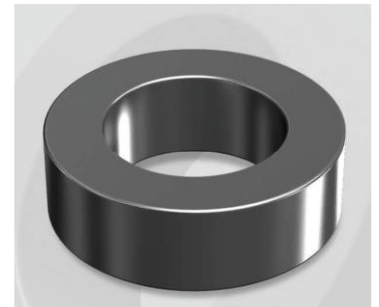


CS1325090G

OD : 1325

Electrical Characteristics

Material	Permeability (μ)	AL \pm 8% (nH/N ²)	DCB (% min) @ 30 Oe	Coreloss (mW/cm ³ , max) @ 50kHz, 100G
SENDUST	75	234	64.4	2.4



Core Dimensions

Dimensions		Uncoated		Coated		Color	Packaging
		(mm)	(inch)	(mm)	(inch)		
OD	(Max)	132.50	5.217	134.20	5.283	Black	Box Qty = 4 pcs
ID	(Min)	78.60	3.094	77.00	3.031		
HT	(Max)	25.40	1.000	26.80	1.055		

Physical Characteristics

Cross Section (A)	Path Length (l)	Window Area (Wa)	Volume (V)	Breakdown Voltage (Vac)
6.710 cm ²	32.4 cm	46.57 cm ²	217.54 cm ³	1,000
1.040 in ²	12.76 in	9,190,102 cmil	13.274 in ³	

Winding Information

0% Winding length/turn (cm)		
11.080		
40% winding factor Surface Area (cm ²)		
649.77		
40% Wound Di.(mm)		
OD	ID	HT
153.59	50.41	49.79

Typical DC Bias Performance

